

PRECISION ACCRETECH BLADE HUB TYPE BLADES FTB/CCB series



MICROTEST
Tél. : + 33 (0)4.90.40.60.90
Email : microtest@microtest-semi.com
Web : www.microtest-semi.com



Higher speed and longer life. Hub type blade that can satisfy this simple demand with high dimension.

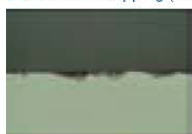
Actual use of the blade will prove its genuine cutting quality.

- Pursued the reduction of chipping and high speed cutting.
- A unique plating technology provides for even distribution of the grit and performance stability.
- Extensive lineup can meet the variety of demands.
- By combining, it can cope with variety of cutting, from the step cutting to the full cutting.



■ Processing example Hub type blade (FTB/CCB type)

■ Backside chipping (Si wafer)



Conventional Blade



ACCT Blade

■ Saw mark (Si wafer)



Conventional Blade



ACCT Blade

■ Blade surface after processing



Conventional Blade



ACCT Blade

■ Blade edge after using for 100m



Conventional Blade



ACCT Blade

■ LCDD cutting example



Wafer surface



Cross section



■ Specification

FTB	Q	35	20	64
Type	Bond	Grit size	Kerf width	Blade exposure

■ Type

FTB	Standard type
CCB	Excellent rigidity type

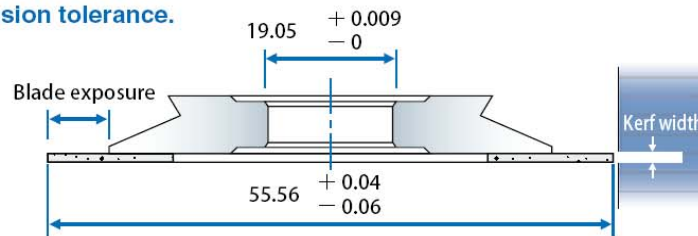
■ Bond

R	Hard
Q	Standard
A	Medium-soft

■ Availability by grit size

Grit size (um)	Code	Availability by grit size		
		R	Q	A
1/3	13		●	
2/4	24	●	●	
3/5	35	●	●	●
4/6	46	●	●	●

■ Figure shows dimension tolerance.



		Blade exposure						
		Code	38	51	64	76	89	102
Kerf width	Code (mm)		0.380 ~ 0.500	0.510 ~ 0.630	0.640 ~ 0.750	0.760 ~ 0.880	0.890 ~ 1.010	1.020 ~ 1.150
	15	0.015 ~ 0.020	1538					
	20	0.020 ~ 0.025	2038	2051	2064			
	25	0.025 ~ 0.030		2551	2564	2576		
	30	0.030 ~ 0.035		3051	3064	3076	3089	
	35	0.035 ~ 0.040			3564	3576	3589	35102
	40	0.040 ~ 0.050			4064	4076	4089	40102
	50	0.050 ~ 0.060				5076	5089	50102

■ Ordering the product

When ordering our product, please refer to our catalog and let us know the details of the product as below.

- 1) Shape and size/ Detailed blade shape and precision.
- 2) Specifications/ Desired specification as well as the current in-use blade.
- 3) Cutting work and condition/ Machine in use, RPM, feed speed, coolant flow rate.

■ Precautions

In order to use the product safely and to bring out the best of the blade's performance, please make sure to thoroughly read the specifications and other related materials of the product.

- * The catalog is subject to change without notice.
- * The catalog is not to guarantee the product quality.